

Product List

RCA Interconnects	
TL317-6	3-Series, 6-CH, 17 ft
TL312-6	3-Series, 6-CH, 12 ft
TL39-6	3-Series, 6-CH, 9 ft
TL317-4	3-Series, 4-CH, 17 ft
TL312-4	3-Series, 4-CH, 12 ft
TL39-4	3-Series, 4-CH, 9 ft
TL317-2	3-Series, 2-CH, 17 ft
TL312-2	3-Series, 2-CH, 12 ft
TL39-2	3-Series, 2-CH, 9 ft
TL36-2	3-Series, 2-CH, 6 ft
TL33-2	3-Series, 2-CH, 3 ft
TL315-2	3-Series, 2-CH, 1.5 ft
TL117-2	1-Series, 2-CH, 17 ft
TL112-2	1-Series, 2-CH, 12 ft
TL19-2	1-Series, 2-CH, 9 ft
TL16-2	1-Series, 2-CH, 6 ft
TL13-2	1-Series, 2-CH, 3 ft
TL115-2	1-Series, 2-CH, 1.5 ft
Y Adapters	
TL3Y-F	3-Series, 2F 1M
TL3Y-M	3-Series, 2M 1F
TL1Y-F	1-Series, 2F 1M
TL1Y-M	1-Series, 2M 1F
RCA to Speaker Wire Adapter	
TL1SPK	1-Series, RCA to Spk
RCA to 3.5mm Adapter	
TL13.5-RCA	1-Series, RCA to 3.5
Power Cable	
TLPW1B-50	1/0 AWG, 50 ft, Black
TLPW1R-50	1/0 AWG, 50 ft, Red
TLPW4B-100	4 AWG, 100 ft, Black
TLPW4R-100	4 AWG, 100 ft, Red
TLPW8B-250	8 AWG, 250 ft, Black
TLPW8R-250	8 AWG, 250 ft, Red
Speaker Wire	
TL122-25P	12 AWG, 25 ft
TL122-250	12 AWG, 250 ft
TL162-50P	16 AWG, 50 ft
TL162-500	16 AWG, 500 ft

RGB Speaker Wire	
TL16RGB-50P	16 AWG, 50 ft
TL16RGB-250	16 AWG, 250 ft
Power Kits	
TLPWRKT-1	1/0 AWG Power Kit
TLPWRKT-4	4 AWG Power Kit
TLPWRKT-8	8 AWG Power Kit
Distribution Blocks	
TLDST-12	1 In 2 Out
TLDST-14	1 In 4 Out
Inline Fuse Holders	
TLFH-ANL	ANL Fuse Holder
TLFH-AFS	AFS Fuse Holder
TLFH-MAXI	MAXI Fuse Holder
Fuses	
TLANL-500	ANL Fuse, 500A
TLANL-300	ANL Fuse, 300A
TLANL-250	ANL Fuse, 250A
TLANL-200	ANL Fuse, 200A
TLANL-150	ANL Fuse, 150A
TLANL-100	ANL Fuse, 100A
TLAFS-200	AFS Fuse, 200A
TLAFS-150	AFS Fuse, 150A
TLAFS-100	AFS Fuse, 100A
TLAFS-80	AFS Fuse, 80A
TLAFS-60	AFS Fuse, 60A
TLMAX-100	MAXI Fuse, 100A
TLMAX-80	MAXI Fuse, 80A
TLMAX-60	MAXI Fuse, 60A
TLMAX-40	MAXI Fuse, 40A
Ring Terminals	
TLRING-1	1/0 AWG
TLRING-4	4 AWG
TLRING-8	8 AWG



Your system is
only as strong as its
weakest link.



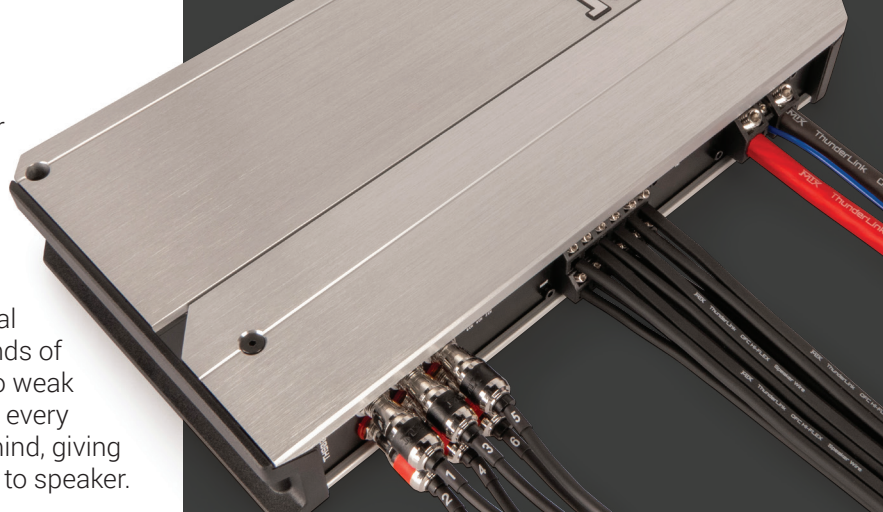
ThunderLink
Wiring and Accessories

Sound is a Place // We Exist to Take You There

© 2025 MiTek Corporation. All rights reserved. MTX, ThunderLink, and ThunderWire are trademarks of MiTek Corporation. All other trademarks are property of their respective owners. Designed and Engineered in the U.S.A. Due to continual product development, all specifications are subject to change without notice.
MTX Audio, 4545 East Baseline Rd. Phoenix, AZ 85042 U.S.A. 1-800-225-5689
MTX008342 RevA 5/25 • AW0016532 • 480271

Power. Clarity. Confidence.

Whether you're building a showstopper or upgrading your daily driver, the right wiring makes all the difference. MTX's ThunderLink wire line delivers the performance, durability, and clean design your system deserves. Engineered for maximum conductivity and minimal signal loss, our wire is built to handle the demands of high-powered installs—no overheating, no weak links. From power cables to speaker wire, every product is crafted with serious audio in mind, giving you the cleanest connection from source to speaker.



Power Kits

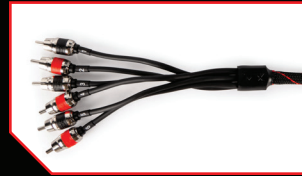
1/0 AWG, 4 AWG, and 8 AWG HI-FLEX power kits provide everything needed to deliver reliable, high-current power to your car audio system.

Built with full AWG spec oxygen-free copper wire, these kits ensure maximum conductivity and durability for high-performance installations.

RCA Cables

RCA Interconnects

3-Series and 1-Series, 2-CH, 4-CH, and 6-CH, available in multiple lengths. Choose the right wire for every installation.

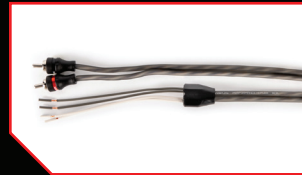


Y Adapters

3-Series and 1-Series, 1M to 2F and 1F to 2M. Split or combine audio signals with minimal interference.

RCA to Speaker Wire

Connect RCA inputs to speaker-level outputs.



RCA to Stereo 3.5

Connect devices with a 3.5mm output to an RCA-equipped audio system.

Power and Speaker Wire

Power Cable

1/0 AWG, 4 AWG, and 8 AWG Hi-FLEX cable. High-quality OFC ensures optimal conductivity and minimal signal loss.



Speaker Wire

12 AWG and 16 AWG wire, also available with RGB LED wiring. Full AWG spec OFC for maximum conductivity and clarity.

Accessories

Distribution Blocks

1 in/2 out and 1 in/4 out options. Solid brass construction and nickel plating for enhanced durability.



Inline Fuse Holders

ANL, AFS, and MAXI style inline fuse holders.

Fuses

ANL, AFS, and MAXI style fuses in various amperages.



Ring Terminals

1/0 AWG, 4 AWG, and 8 AWG ring terminals with red and black heat shrink.