

Specifications

Mono Block Class-D Amplifiers

Model	MA750.1	MA1500.1	MA2500.1
RMS Power Output at 1Ω	750W	1500W	2500W
RMS Power Output at 2Ω	500W	1000W	1750W
RMS Power Output at 4Ω	250W	500W	1000W
RMS Power Output at 4Ω Bridged	N/A	N/A	N/A
Total Harmonic Distortion	<0.1%	<0.2%	<0.1%
Signal to Noise Ratio	>100dB	>100dB	>100dB
Input Sensitivity	10V - 200mV	10V - 200mV	10V - 200mV
Crossover Range	50Hz - 250Hz	50Hz - 250Hz	50Hz - 250Hz
Frequency Response	20Hz - 250Hz	20Hz - 250Hz	20Hz - 250Hz
Bass Boost	0dB - 12dB	0dB - 12dB	0dB - 12dB
Subsonic Filter	10Hz - 55Hz	10Hz - 55Hz	10Hz - 55Hz
EBC Remote Knob	Yes	Yes	Yes
Recommended Fuse Rating	80A - 100A	150A - 200A	250A - 300A
Dimensions HxWxD	2" x 9-3/4" x 7" 50 x 247 x 176mm	2" x 11-3/4" x 7" 50 x 297 x 176mm	2" x 14-1/2" x 7" 50 x 367 x 176mm

Full Range Class-D Amplifiers

MA400.4	MA800.4	MA1400.5	MA900.6
N/A	N/A	800W (sub only)	N/A
100W x 4CH	200W x 4CH	150W x 4CH + 500W	150W x 6CH
50W x 4CH	100W x 4CH	100W x 4CH + 300W	75W x 6CH
200W x 2CH	400W x 2CH	300W x 2CH (CH1/2/3/4)	300W x 3CH
<0.1%	<0.2%	<0.4%	<0.1%
>98dB	>98dB	>95dB	>95dB
10V - 200mV	10V - 200mV	10V - 200mV	10V - 200mV
40Hz - 400Hz	40Hz - 400Hz	40Hz - 400Hz (CH1-4) 50Hz - 250Hz (Sub)	40Hz - 400Hz
20Hz - 20kHz	20Hz - 20kHz	20Hz - 20kHz (CH1-4) 20Hz - 250Hz (Sub)	20Hz - 20kHz
N/A	N/A	0dB - 12dB (Sub)	N/A
N/A	N/A	10Hz - 55Hz (Sub)	N/A
No	No	Yes	No
40A - 60A	60A - 80A	150A - 200A	100A - 150A
2" x 8-3/16" x 7" 50 x 207 x 176mm	2" x 9-3/4" x 7" 50 x 247 x 176mm	2" x 14-1/2" x 7" 50 x 367 x 176mm	2" x 12-1/8" x 7" 50 x 307 x 176mm



MTX®



MA SERIES

Marine Amplifiers

Sound is a Place // We Exist to Take You There

© 2025 MiTek Corporation. All rights reserved. MTX is a trademark of MiTek Corporation. All other trademarks are property of their respective owners. Designed and Engineered in the U.S.A. Due to continual product development, all specifications are subject to change without notice. MTX Audio, 4545 East Baseline Rd. Phoenix, AZ 85042 U.S.A. 1-800-225-5689. MTX008246 RevA 5/25 • AW0016476 • 480271

Never Leave Your Music Behind

MA Series marine amplifiers from MTX are newly designed to withstand all the challenges that a marine environment can present. Conformal-coated circuit boards and stainless steel connections resist moisture and corrosion for lasting durability. MA Series amplifiers provide season after season of reliability whether your boat is in salt or fresh water.

Designed for outdoor loving audiophiles, MA Series marine amplifiers ensure your speakers and subwoofers have the power they need to be heard over the sound of the engine or waves no matter what type of boat you have.

Sound is a Place

We're in the business of making serious sound physical. That's why we say "sound is a place". That means top-of-the-line tech that envelops you and whisks you away to places you never thought possible.

Our sound doesn't stay static. We continually find ways to innovate the highest-quality sound to match the performance of your boat.

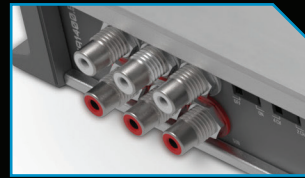
Where will the sound take you?



Features

Marine-Ready Construction

Conformal-coated PCBs protect against environmental factors



Small Footprint

Compact amplifier size allows for easy installation



Rustproof

Stainless steel hardware ensures years of rust free operation



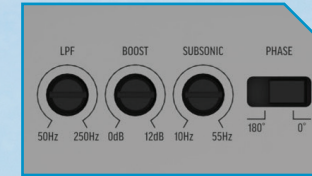
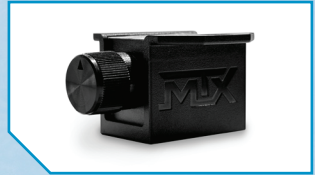
Integrated Power Indicator

LED illuminates blue when the amplifier is powered on and operating normally

Features

External Bass Control

Effortlessly adjust bass levels from your boat's helm

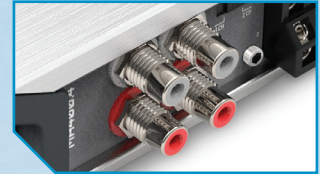


Total Control

24db Linkwitz x-overs, bass boost, subsonic filter, and clip light allow precise tuning

Tiffany Style RCAs

Provide durability and ensure a superior connection to the cables



Direct Insert Terminals

Decreased resistance for higher power transfer and efficiency

