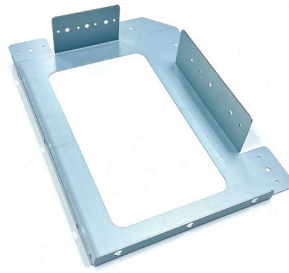




571MK-F-BR

BRACKET FOR 571MK-F



Horizontal Mount



Vertical Mount

TECHNICAL DATA SHEET

PRODUCT SUMMARY

The 571MK-F-BR bracket is designed to work in tandem with the 571MK-F flush mount kit to fit your 571C/571D mic stations flush into new installations. The 571MK-F-BR works in either a horizontal or vertical configuration and is intended for use at the pre-construction stage before the drywall is installed. This bracket is optional as the 571MK-F has dog legs to work in post construction scenarios.

KEY FEATURES

- Allows for post construction installation of the 571 mic station
- Works in Horizontal or Vertical Orientation

APPLICATIONS

- Airports
- Industrial
- Mass Transit
- Corporate
- Educational

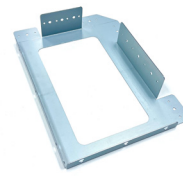
ARCHITECT AND ENGINEER SPECS

The bracket for the 571MK-F shall be a mounting bracket allowing for installation of a to a stud. The bracket shall allow for a later installation of the 571MK-F mounting kit.

The bracket for the 571MK-F shall be the AtlasIED 571MK-F-BR.

571MK-F-BR

BRACKET FOR 571MK-F



Horizontal Mount

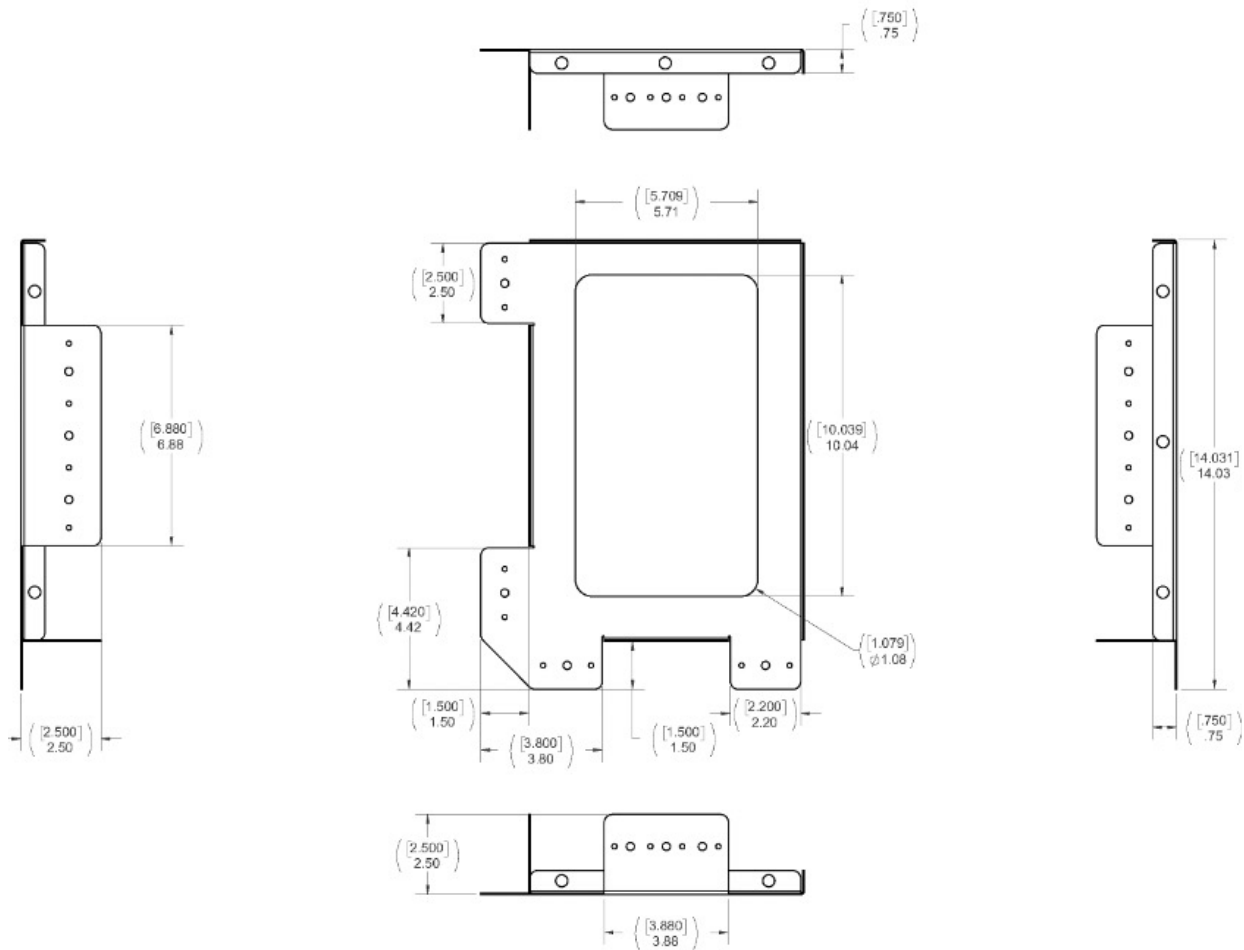
Vertical Mount

TECHNICAL DATA SHEET

AUDIO SPECIFICATIONS / PERFORMANCE

571MK-F-BR	
Unit weight	1lb-7oz (650g)
Shipping weight	1lb-7.5oz (665g)

DIMENSIONAL DRAWINGS



©2024 Atlas Sound LP. The Atlas "Circle A", Soundolier, and Atlas Sound are trademarks of Atlas Sound L.P. IED is a Registered Trademark of Innovative Electronic Designs, LLC. All rights reserved. All other Trademarks are property of their respective owners. No endorsement is implied. Due to continual product development, specifications are subject to change without notice. AT5007715 Rev.A 4/24